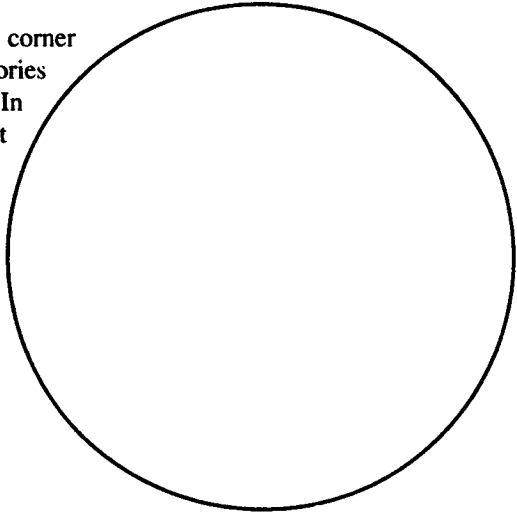


Wyoming Certified Land Corner Recordation Certificate

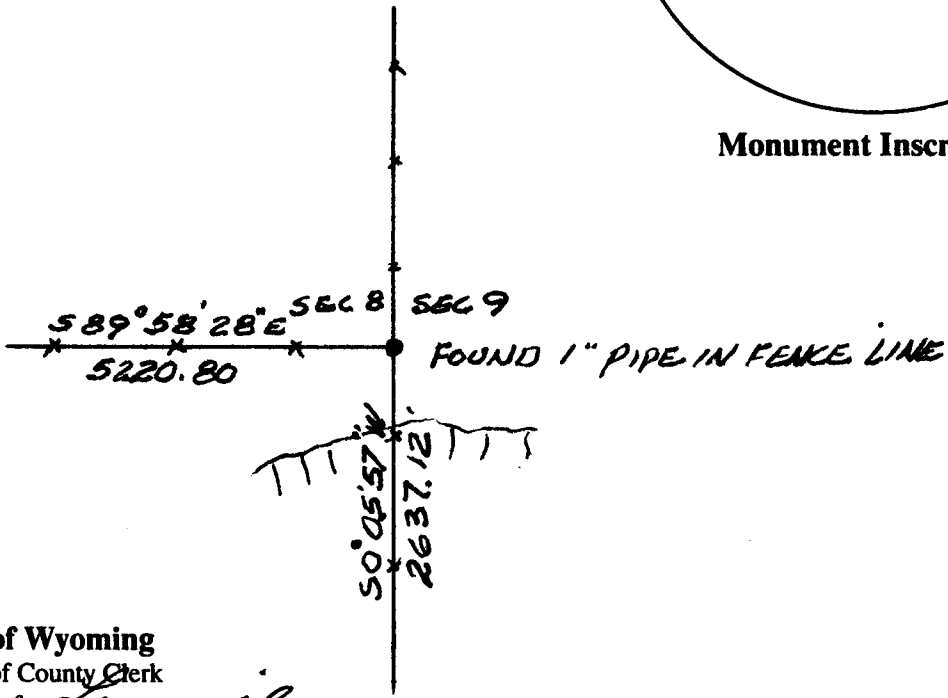
This form is to be completed in accordance with W.S. 36-11-101, printed in black ink or typed, and shall be for one individual corner.

Describe below, or show in sketch attached to this form, the corner evidence found. Include condition and type of monument, accessories and ties. Describe any maintenance or rehabilitation performed. In the circle to the right, show monument inscription. If monument is determined lost or obliterated, restate the GLO or BLM original field note record; describe or show the procedure used to reestablish the corner and all data as above for a found monument.



Monument Inscription

Field Date _____ Office Reference _____



State of Wyoming
Office of County Clerk
County of Carbon

This Certified Land Corner Recordation Certificate was filed for record on the 18th day of Oct, 1997, in Book No. T 13, R 67, on Alpha-Numeric coordinates 9-9 and was noted on the Cross Index Plat.

Janet C Whitehead
County Clerk

Corner Type: Aliquot Corner Other
Section(s) 8 & 9 Meridian 6th P.M.
Corner Name 1/4 COR. Township 13 N. Range 67 W Page _____
Sheet _____ of _____

D.M. Hopkins & Assoc.
3313 Birch Rd.
82001

BOOK 1310

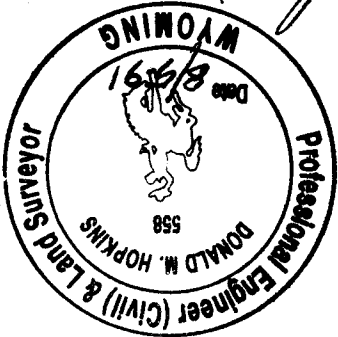
RECEIVED
LARAMIE COUNTY
CHEYENNE, WY.

91 OCT 18 PM 1 24
090848

Sheet 1 of 1

Signature, Seal, and Date

Donald M. Hopkins



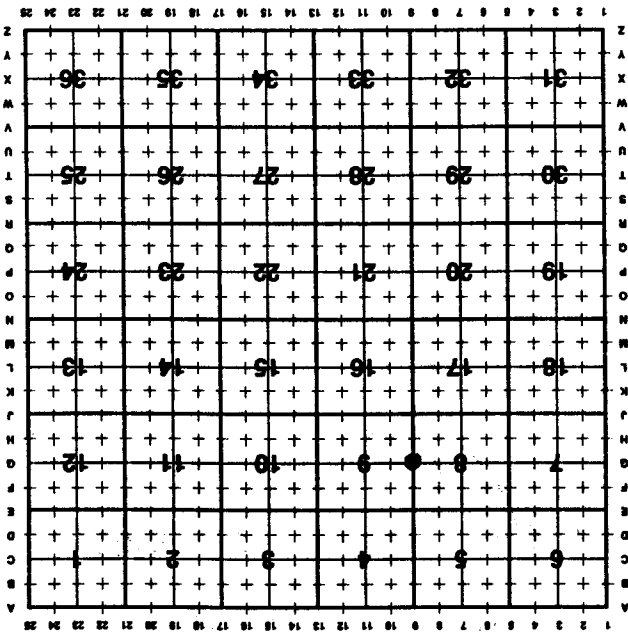
CHEYENNE, WY 82003
632-4763
PO Box 6106
DON HOPKINS & ASSOC.

Company or Agency
Mailing Address
Street Address
City, State, ZIP
Telephone, FAX

I, DONALD M HOPKINS, Wyoming PLS/PE 558 certify that I, or others under my supervision, have performed the work as described above and completed this form.

Certification

State Plane Coordinates (optional)
Zone NAD 1927 NAD 1983 NAVD 1988
North (Y) = _____ East (X) = _____
Latitude _____ Longitude _____
Scale Factor _____ Geoid Height _____
feet/meters



Cross Index Plat

Section, quarter and sixteenth corners will be marked with a dot at the corner location. The alpha-numeric coordinate number is then determined for the intersection of the two lines. A corner that applies to two or more townships shall be filed under all that apply by the use of photo copies.
Closing corners will be indexed under the township in which they control ownership. For lying between grid designations, mark the appropriate grid area with a dot and use the index code to the north and west (local systems may be used if the method is approved by the County Surveyor or Clerk and a written description of its use is filed in the front of each book of certificates).

Directions for using the Cross Index Plat